



## SPECIAL-PURPOSE VEHICLES



**NEW**

Bars-8 tactical armored vehicle  
Bars-6 tactical armored vehicle  
Light-duty drop-side truck Bogdan Cargo (4x4)  
Ambulance vehicle Bogdan Ambulance (4x4)  
Ambulance vehicle Bogdan Military Ambulance (4x4)  
Multi-purpose truck Bogdan KM-450 (4x4)  
TRUCK BOGDAN (Hyundai) HD 72

TRUCK BOGDAN (Hyundai) HD 120  
TRUCK BOGDAN (MAZ) 5316 (4x4)  
TRUCK BOGDAN (MAZ) 6317(6x6)  
TRUCK BOGDAN (MAZ) 6425 road tractor (6x6)  
Armored truck BOGDAN 6317(6x6)  
Bus BOGDAN A222  
Bus BOGDAN KM-450



JunkyardCollection.com

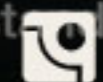
# AUTOMOBILE COMPANY "BOGDAN MOTORS"



Automobile company "Bogdan Motors" is one of leaders in the automotive industry of Ukraine, consisting of range of companies that provide full technology cycle of vehicle production for different purposes (passenger cars, buses, trolleybuses, trucks, special-purpose vehicles etc.).

We combine production facilities with our experience of more than 20 years in the areas of design, engineering innovations, technology development and quality. AC "Bogdan Motors" can produce up to 150 000 passenger cars, up to 9 000 buses and trolleybuses of all classes and around 15 000 trucks and special-purpose vehicles per annum at its plants, located in Lutsk and Cherkassy.

Efficient cooperation with worldwide leaders in research and design of special-purpose vehicles as well as involvement of Ukrainian experts enable us to develop and produce vehicles that meet modern international standards.



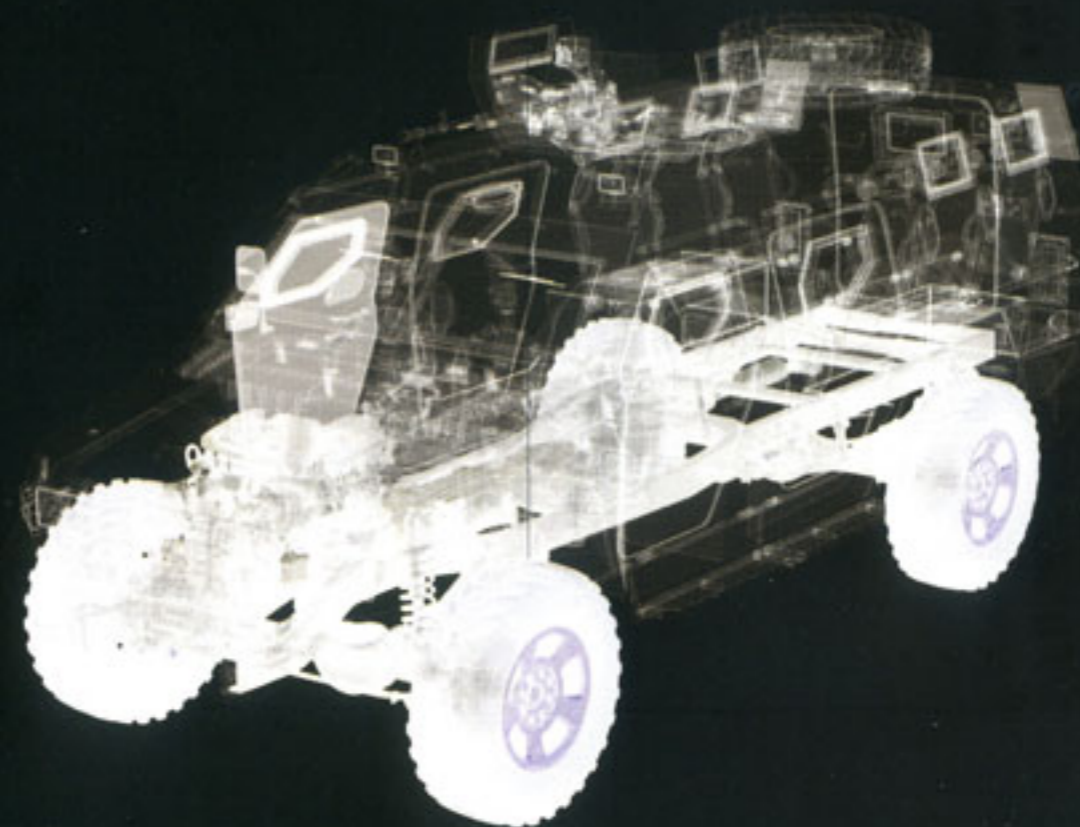
ARMORED PERSONNEL CARRIER  
**BARS-8**



**BARS-8 is a multi-purpose APC (armored personnel carrier) of enhanced durability with 4x4 wheel formula and GVW of up to 9 tons. This vehicle meets modern international standards, adopted for military vehicles, and is designed for transportation of troops on cross-country terrain and unpaved roads as well as for fulfillment of tactical missions.**

## **MAIN ADVANTAGES**

Strong and durable chassis frame, enhanced suspension and axles, powerful 6.7l turbo-diesel Cummins engine, reinforced exterior body panels and all-wheel drive, easy field maintenance. BARS-8 provides protection against mines and bullets according to STANAG 4569 Level 2 standard. 6-steps manual and automatic transmissions are both available. Vehicle is equipped with both inter-axle and inter-wheel differentials.



# ARMORED PERSONNEL CARRIER BARS-8

## MODIFICATIONS



BARS-8 armored personnel carrier



BARS-8 tactical armored mortar firing vehicle



BARS-8 armored personnel carrier with "Iva" ("Willow") remote-controlled combat module



BARS-8 armored personnel carrier with "Jab" ground reconnaissance complex and "Enclave" electronic jammer



BARS-8 armored personnel carrier with "Viy" remote-controlled combat module



BARS-8 armored ambulance vehicle

**BARS-8 has payload of 2 tons, its passenger capacity is 6 soldiers and 2 crew members. Different combat modules (weapon stations) can be mounted on the vehicle.**

**BARS-8 can climb grade with longitudinal slope of 60%, move across surface with side slope of 20-40%. It easily crosses fords of up to 76 cm in depth and can move along deep wheel track due to its ground clearance of 28 cm.**

## TECHNICAL SPECIFICATIONS



Engine	6.7 Cummins / V8 / turbo diesel
Engine displacement, cm3	6690
Wheel formula	4x4
Transmission	6 AT / 6MT Alisin
Engine power, hp/rpm	350 / 2900
Maximum torsion torque, Nm/rpm	1050 / 1600
GVW, kg	10000
Maximum speed, km/h	120
Dimensions (L/W/H), mm	6707 / 2525 / 2475
Wheelbase, mm	3670
Ground clearance, mm	280
Payload, kg	2000
Longitudinal slope, %	60
Side slope, %	20-40
Fording ability, mm	760
Armor protection class	STANAG 4569 Level 2
Number of seats	6+2

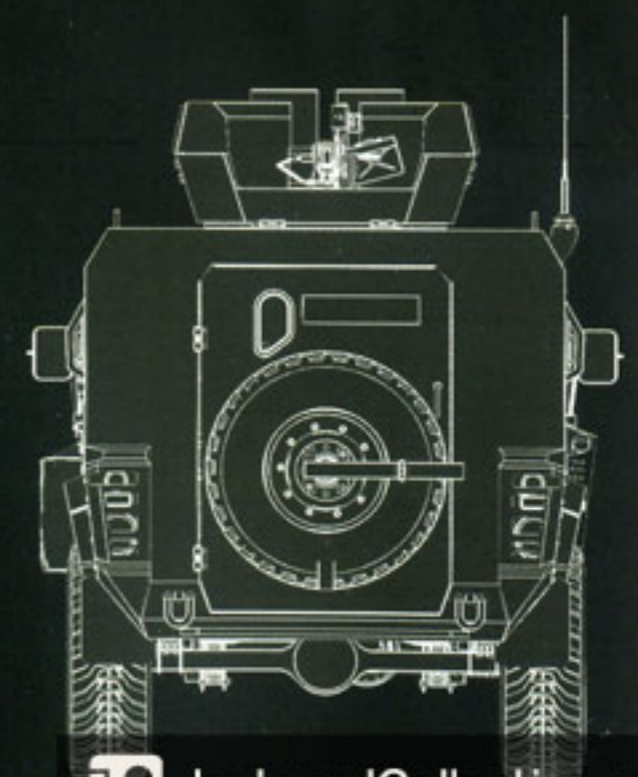
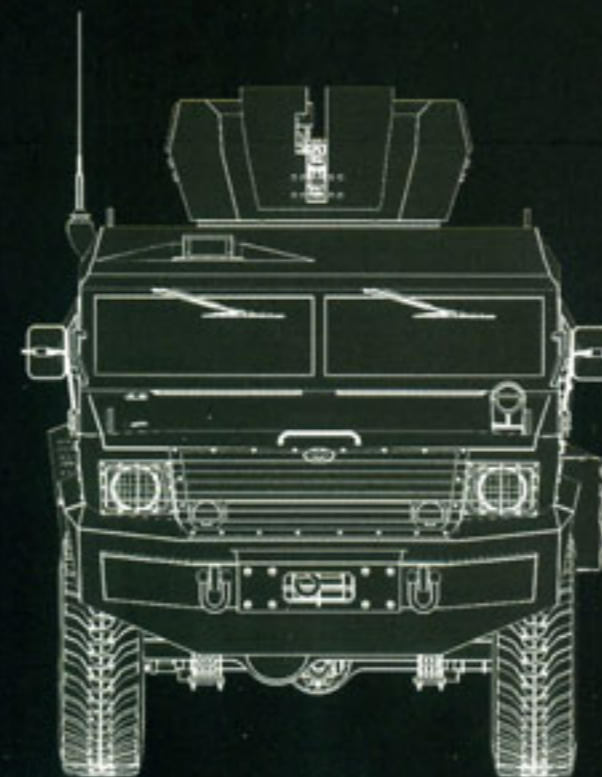
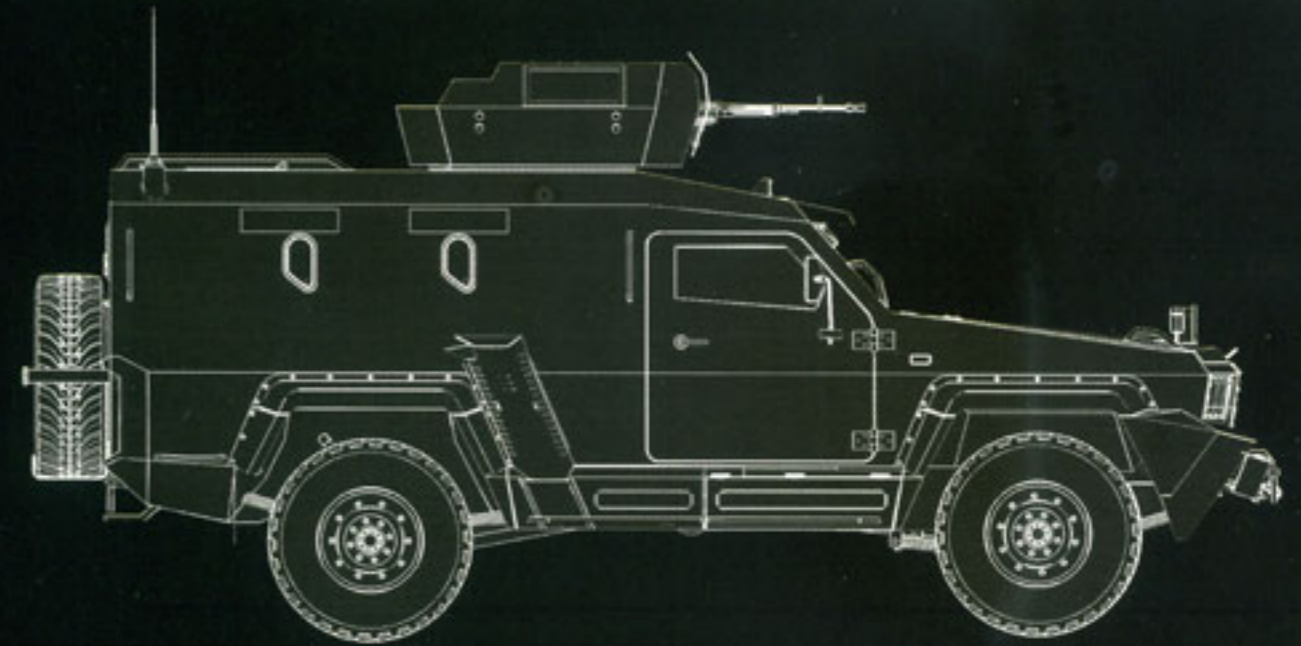
ARMORED PERSONNEL CARRIER  
**BARS-6**



**BARS-6 is a multi-purpose armored personnel carrier with 4x4 wheel formula and GVW of up to 5,65 tons, which has been designed according to requirements and experience of modern military operations. This vehicle is developed for fulfillment of tactical missions, checkpoint defense, transportation of troops and cargo as well as for reconnaissance and special missions.**

BARS-6 provides protection against mines and bullets according to STANAG 4569 Level 1 standard. It can be used as a general-purpose vehicle, reconnaissance-and-patrol vehicle, ambulance vehicle or police van, and it can be used for support of special troops (rapid-reaction force, peace-keeping force and military police).

BARS-6 complies with highest quality standards, and is designed specifically for military operations. Main advantages of BARS-6 vehicle: strong and durable chassis frame, all-wheel drive, enhanced suspension and axles, reinforced exterior body panels and easy field maintenance.





# ARMORED PERSONNEL CARRIER **BARS-6**

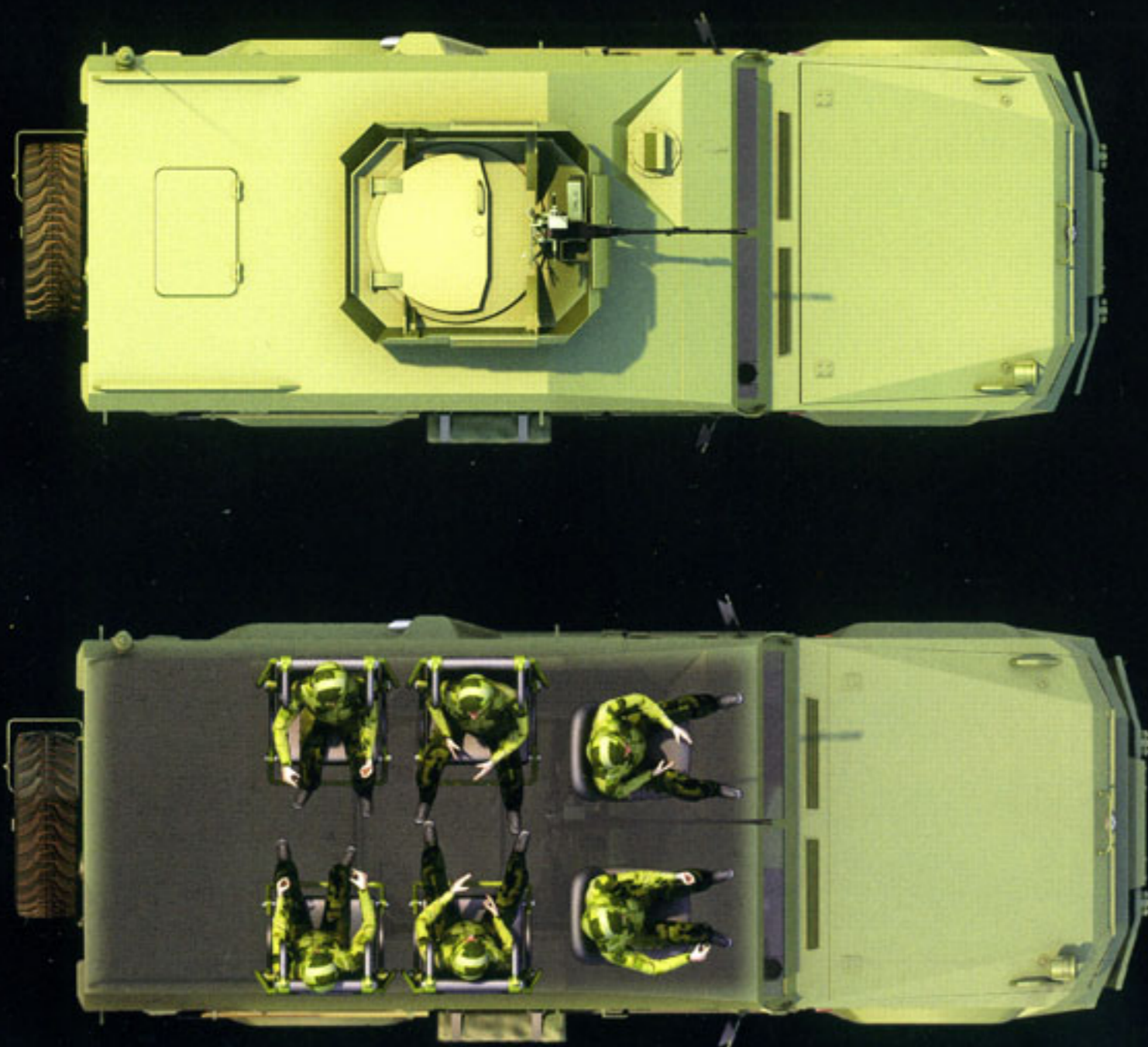
BARS-6 has payload of 1.65 tons, its passenger capacity is 4 soldiers and 2 crew members. Different combat modules (weapon stations) can be mounted on the vehicle.



**3.9l 4-cylinder Hyundai D4D diesel engine is easily started at temperatures from -35 to +50°C. Vehicle is equipped with 5-steps manual transmission and both inter-axle and inter-wheel differentials.**

**Bars-6 can climb grade with longitudinal slope of 60%, move across surface with side slope of 20-40%. It easily moves across ford of up to 76 cm in depth and can move along deep wheel track due to its ground clearance of 25 cm.**

## TECHNICAL SPECIFICATIONS



Engine	3.9 Hyundai D4D / 4 in-line / diesel
Engine displacement, cm <sup>3</sup>	3907
Wheel formula	4x4
Transmission	5MT
Engine power, hp/rpm	139 / 2900
Maximum torsion torque, Nm/rpm	373 / 1600
GVW, kg	5650
Maximum speed, km/h	100
Dimensions (L/W/H), mm	5500 / 2200 / 2400
Wheelbase, mm	3200
Ground clearance, mm	250
Payload, kg	1650
Longitudinal slope, %	60
Side slope, %	20-40
Fording ability, mm	760
Armor protection class	STANAG 4569 Level 2
Number of seats	4+2



MULTI-PURPOSE TRUCK

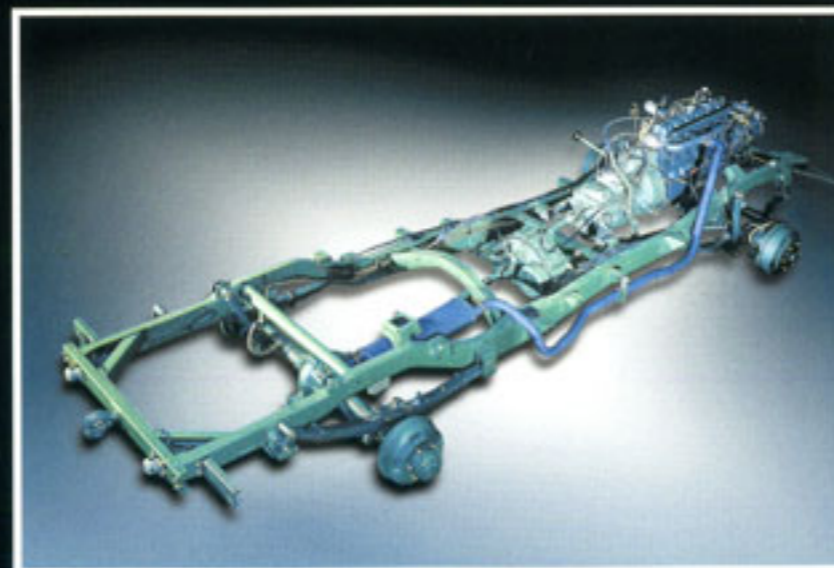
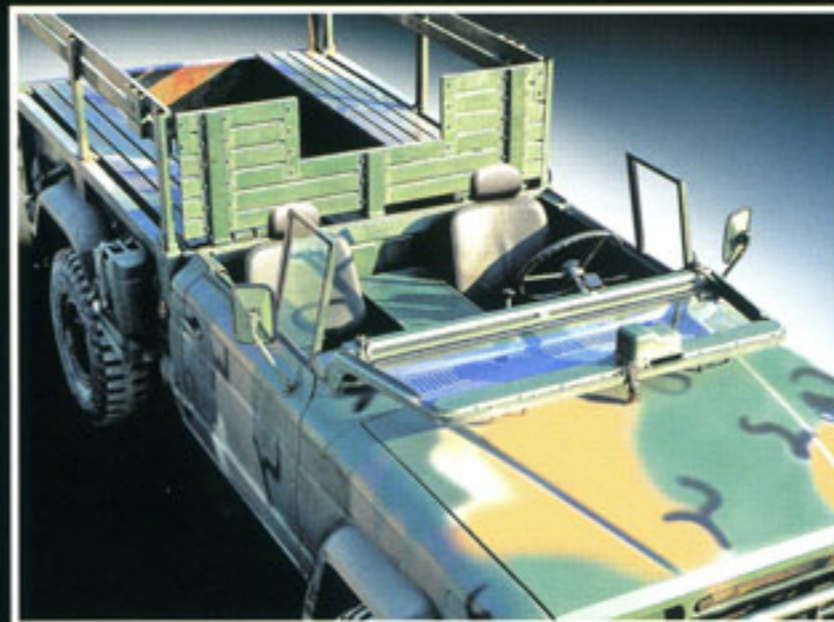
# BOGDAN **KM-450** (4X4)



Chassis, specifically designed for military needs, can be used for construction of vehicles for different purposes: general-purpose vehicle (curtain-sided truck) as well as base for different special military vehicles (gun-control vehicle, medical truck, communication van, mobile laboratory vehicle, LMRL (Light Multiple Rocket Launch) or LATW (Light Antitank Weapons) vehicle, mobile accommodation module etc. It can also be used as light armored vehicle for special purposes.

## TECHNICAL SPECIFICATIONS

Vehicle has high maneuverability both on paved roads and on cross-country terrain. It can cross fords of up to 76 cm in depth and climb grade with longitudinal slope of 60%, it has ground clearance of 25 cm and can easily bridge vertical obstacles at day and night. It is designed specifically for transportation of troops and cargo on cross-country terrain and on unpaved roads. Payload is 2.5 tons and seating capacity is 12 fully equipped soldiers.



Engine	3.9 Hyundai D4D / 4 in-line / diesel
Engine displacement, cm <sup>3</sup>	3907
Wheel formula	4x4, Part Time
Transmission	5MT
Engine power, hp/rpm	139 / 2900
Maximum torsion torque, Nm/rpm	373 / 1600
GVW, kg	5650
Maximum speed, km/h	104
Dimensions (L/W/H), mm	5460 / 2180 / 2450
Wheelbase, mm	3200
Ground clearance, mm	254
Payload, kg	2500
Longitudinal slope, %	60
Angle of approach/departure, °	45/20
Fording ability, mm	760
Operating range, km	700
Fuel tank volume, l	106

LIGHT-DUTY CURTAIN-SIDED TRUCK  
**BOGDAN CARGO (4X4)**



It is frame vehicle with all-wheel drive, designed for transportation of troops and cargo. It is built on chassis made by Isuzu. Trapezoidal frame provides rigidity of the construction in off-road conditions and on cross-country terrain. Payload is 1100 kg, seating capacity - 8 fully equipped soldiers. By default it is a rear-drive vehicle, this feature allows to save fuel while driving on paved roads.. Front axle is activated by electric clutch, it has reduced axle ratio. Vehicle can be also supplied as a frame chassis.

## TECHNICAL SPECIFICATIONS

Default package of vehicle includes central lock with remote control, air conditioner, hydraulic power steering, anti-fog front lights and stereo audio system with CD and USB-port; these features make this army vehicle able not only to withstand hard tests, but also provide comfort for the crew.



Engine	4 cylinder turbo diesel
Engine displacement, cm3	1996
Wheel formula	4x4, Part Time
Transmission	6MT
Engine power, hp(Kw)/rpm	143 (105) / 2900
Maximum torsion torque, Nm/rpm	305 /1800-2800
GVW, kg	2910
Maximum speed, km/h	140
Dimensions (L/W/H), mm	5126 / 1800 / 2280
Wheelbase, mm	3050
Ground clearance, mm	194
Payload, kg	1100
Longitudinal slope, %	30
Angle of approach/departure, °%	30 / 24
Fuel tank volume,l	70
Fuel consumption, l/100 km (road/city/combined)	7.1 / 8.0 / 7.4

AMBULANCE VEHICLE

# BOGDAN **AMBULANCE** (4X4)



Off-road terrain is not a problem for ambulance vehicle based Great Wall Wingle 5 (4x4). This vehicle is capable not only to deliver an injured to the hospital it is equipped well enough to allow medic crew to render necessary emergency aid during transportation.

Vehicle can be fitted according to customer's needs. Default package includes light and sound alarm, 2 swiveling spotlights, auxiliary battery pack, AC adaptor (220V), Webasto autonomous heater (power – 4kW), lung ventilator with manual aspirator, KPI-02 oxygen inhaler, dispenser, foldable stretchers with fixtures, wheelchair with intake unit, racks and boxes with shelves, table with individual lighting set of transportation splints, "Medint 1-M" paramedical kit and other equipment, necessary for emergency medical aid.



## TECHNICAL SPECIFICATIONS

Engine	4 cylinder turbo diesel
Engine displacement, cm <sup>3</sup>	1996
Wheel formula	4x4, Part Time
Transmission	6MT
Engine power, hp(Kw)/rpm	143 (105) / 2900
Maximum torsion torque, Nm/rpm	305 /1800-2800
GVW, kg	2910
Maximum speed, km/h	140
Dimensions (L/W/H), mm	5040 / 1800 / 1730
Wheelbase, mm	3050
Ground clearance, mm	194
Payload, kg	1100
Longitudinal slope, %	30
Angle of approach/departure, °%	30 / 24
Fuel tank volume, l	70
Fuel consumption, l/100 km (road/city/combined)	7.1 / 8.0 / 7.4



AMBULANCE VEHICLE

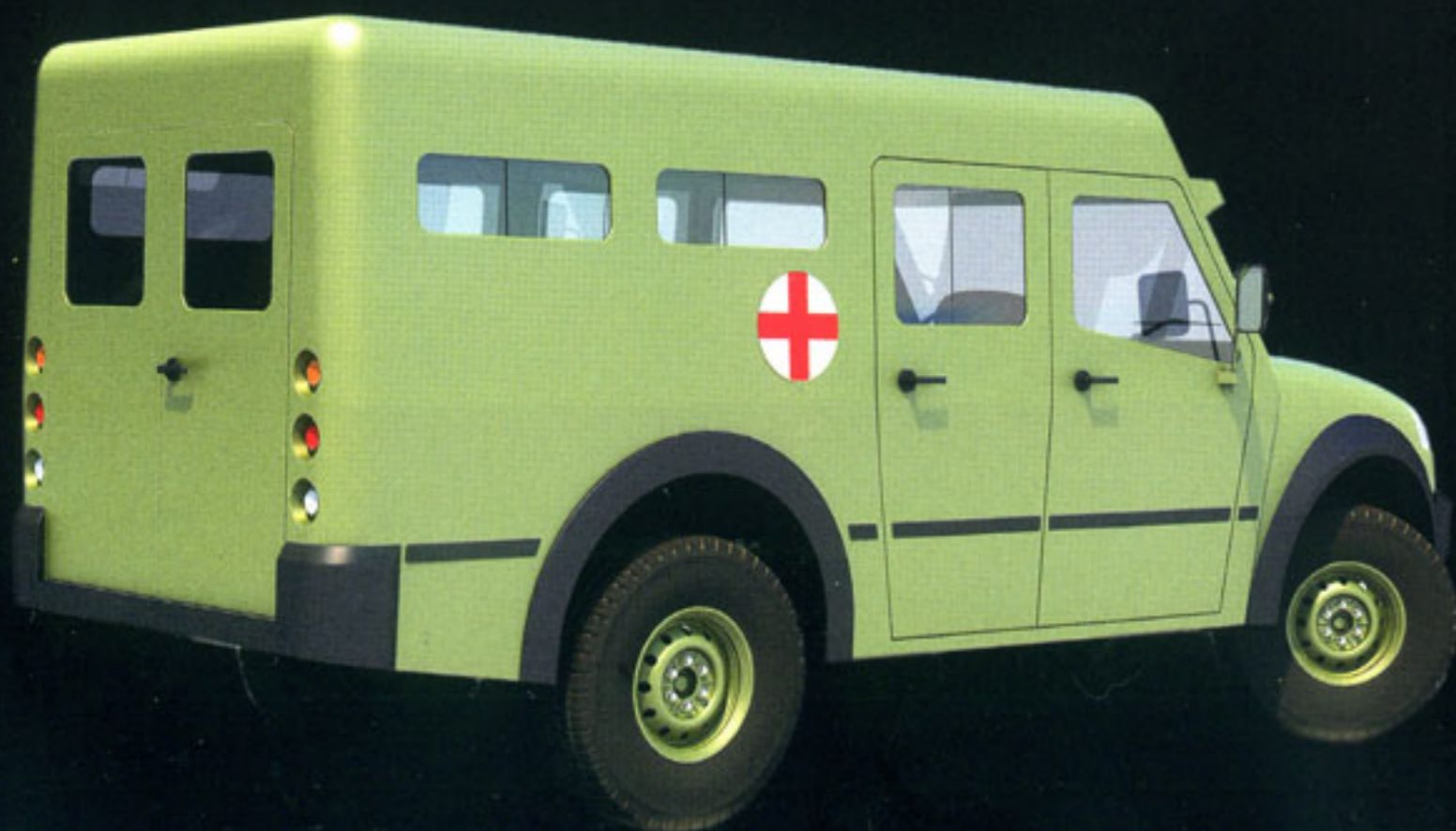
# BOGDAN MILITARY AMBULANCE (4X4)



Off-road terrain is not a problem for ambulance vehicle based on Great Wall Wingle 5 (4x4). This vehicle is capable not only to deliver an injured to the hospital it is equipped well enough to allow medic crew to render necessary emergency aid during transportation.

## TECHNICAL SPECIFICATIONS

Vehicle can be fitted according to customer's needs. Basic equipment includes light and sound alarm, 2 swiveling spotlights, auxiliary battery pack, AC adaptor (220 V), Webasto autonomous heater (power – 4 kW), lung ventilator with manual aspirator, KPI-02 oxygen inhaler, dispenser, foldable stretchers with fixtures, wheelchair with intake unit, racks and boxes with shelves, table with individual lighting, set of transportation splints, "Medint 1-M" paramedical kit and other equipment, necessary for emergency medical aid.



Engine	4 cylinder turbo diesel
Engine displacement, cm <sup>3</sup>	1996
Wheel formula	4x4, Part Time
Transmission	6MT
Engine power, hp(Kw)/rpm	143 (105) / 2900
Maximum torsion torque, Nm/rpm	305 /1800-2800
GVW, kg	2910
Maximum speed, km/h	140
Dimensions (L/W/H), mm	5126 / 1800 / 2280
Wheelbase, mm	3050
Ground clearance, mm	194
Payload, kg	1900
Longitudinal slope, %	30
Angle of approach/departure, °%	30 / 24
Fuel tank volume, l	70
Fuel consumption, l/100 km (road/city/combined)	7.1 / 8.0 / 7.4

TRUCK

# BOGDAN (HYUNDAI) HD 72 EURO-2



Bogdan (Hyundai) trucks are well known for operation economy, functionality and reliability. Bogdan (Hyundai) HD 72 trucks, maintenance-friendly and easy to operate, will be extremely useful for transportation of any cargo. Payload of up to 4,5 tons combined with low fuel consumption (18 l / 100 km) makes these vehicles very attractive means of transportation of military cargo, and ground clearance of 20 cm combined with all-wheel drive with reduced axle ratio assure good cross-country ability of the vehicle both on cross-country terrain and on unpaved roads. By default it is a rear-drive vehicle, this feature allows to save fuel while driving on paved roads. Front axle can be activated from driver's cabin. Both 2WD and 4WD versions of truck are available.

## TECHNICAL SPECIFICATIONS

Basic configuration of vehicle includes ABS, EBD, anti-fog lights, electric mirrors, central lock and other options that assure safety and comfort of the crew. Benches in cargo compartment are easily foldable, and this feature expands functionality of the vehicle: it can be used not only for cargo transportation, but for transportation of troops as well. Primary braking system is hydraulic, secondary braking system is gas-dynamic.



Vehicle type	Multi-purpose 4x4 truck chassis
Dimensions (L/W/H), mm	6270 / 2000 / 2250
Wheelbase, mm	3570
Ground clearance, mm	200
Curb weight, kg	3690
GVW, kg	7000
Payload, kg	3310
Engine	D4DB E-II
Engine type	4 cylinder turbo diesel
Engine displacement, cm <sup>3</sup>	3907 / 3933
Engine power, hp/rpm	140 / 2500
Maximum torsion torque, Nm/rpm	373 / 1600
Maximum speed, km/h	100
Fuel consumption, l/100 km	18
Fuel tank volume, l	100

TRUCK

# BOGDAN (HYUNDAI) HD 120



**Bogdan (Hyundai) HD 120** is a large truck with payload of 8 tons and volume of cargo compartment of 37 m<sup>3</sup> will assure prompt delivery of any cargo. Fuel consumption of this model is 22 l / 100 km, and operating range is almost 1000 km. As well as other Hyundai trucks with all-wheel drive, it can climb grade with longitudinal slope of 60% and cross fords of up to 90 cm in depth. All-wheel drive transmission with reduced axle ratio (12), blocking of differential and pneumatic gearbox control, combined with ground clearance of 23 cm, assure good cross-country ability of the vehicle both on cross-country terrain and on unpaved roads. Both 2WD and 4WD versions of truck are available.

## TECHNICAL SPECIFICATIONS

Pneumatic primary braking system with ABS, combined with gas-dynamic secondary braking system, assure safe and predictable behavior of vehicle on the road. ASR (anti-spin regulation), anti-fog lights and hydraulic power steering make driver's work more simple and efficient. Seat suspension, power windows, sleeping berth, audio system, comfortable lighting and shelves above the windshield assure comfort during long distance trips. Due to foldable seats in cargo compartment up to 36 fully equipped soldiers can be transported.



Vehicle type	Multi-purpose 4x4 truck chassis
Dimensions (L/W/H), mm	7670 / 2495 / 3005
Wheelbase, mm	4895
Ground clearance, mm	230
Curb weight, kg	4305
GVW, kg	12520
Payload, kg	8215
Engine	D6GA, E-III/E-IV
Engine type	6 cylinder turbo diesel
Engine displacement, cm <sup>3</sup>	5899
Engine power, hp/rpm	225 / 2500
Maximum torsion torque, Nm/rpm	638 / 1400
Maximum speed, km/h	100
Fuel consumption, l/100 km	22
Fuel tank volume, l	200

TRUCK

**BOGDAN (MAZ) 5316 (4X4)**



**BOGDAN (MAZ) 5316** all - wheel drive curtain-sided truck can be supplied in two versions: with cargo compartment only for cargo transportation and with versatile cargo compartment, equipped with foldable seats for transportation of 20 soldiers and 2 crew members. This model has excellent cross-country ability due to ground clearance of 35 cm, blocking inter - axle and rear inter- wheel differentials. Vehicle can tow trailer with total weight up to 20 tons.

## TECHNICAL SPECIFICATIONS

This model has large non-sprung cabin with 1 sleeping berth. Vehicle is equipped with a hoist with towing capacity of 8000 kgf and tow rope of 60 m. Starting preheater enable reliable start of engine at low temperatures. Vehicle is also equipped with central tire inflation system.



Vehicle type	Drop-side 4x64 truck
Dimensions (L/W/H), mm	8160 / 2550 / 3460
Wheelbase, mm	4895
Ground clearance, mm	350
Curb weight, kg	11000
GVW, kg	17150
Payload of chassis, kg	6000
Engine	YaMZ-238 DE2 EURO2
Engine type	8 cylinder V-type diesel
Engine displacement, cm <sup>3</sup>	14860
Engine power, hp (kW)	330 (243)
Maximum torsion torque	1274
Maximum speed, km/h	85
Fuel tank volume, l	200+200
GCW, kg	37150



TRUCK

# BOGDAN (MAZ) 6317 (6X6)



**BOGDAN (MAZ) 6317 all - wheel drive curtain-sided truck can be supplied in two versions: with cargo compartment only for cargo transportation and with multi-purpose cargo compartment, equipped with foldable seats for transportation of 20 military troops. Capacity of cargo compartment is 27.5 m<sup>3</sup> This model has excellent cross-country ability due to ground clearance of 35 cm, blocking inter - axle and rear inter- wheel differentials.**

## TECHNICAL SPECIFICATIONS

This model has large non-sprung cabin with 1 sleeping berth. Vehicle is equipped with a hoist with towing capacity of 12000 kgf and tow rope of 60 m. Starting preheater enable reliable start of engine at low temperatures. Powerful engine, multiple-step gearbox, central tire inflation system, wide-base off-road tires, differential blocking and big ground clearance enable this vehicle to operate in cross-country and to serve as a trailer train with maximum gross weight of up to 45 tons.



Vehicle type	Curtain-sided 6x6 truck.
Dimensions (L/W/H), mm	9850 / 2700 / 3460
Wheelbase, mm	4200+1400
Ground clearance, mm	350
Curb weight, kg	14000
GVW, kg	25150
Payload of chassis, kg	11000
Engine	YaMZ-238 DE2 EURO2
Engine type	8 cylinder V-type diesel
Engine displacement, cm <sup>3</sup>	14860
Engine power, hp (kW)	330 (243)
Maximum torsion torque	1274
Maximum speed, km/h	85
Fuel tank volume, l	200+350
GCW, kg	45000

ROAD TRACTOR  
**BOGDAN (MAZ) 6425 (6X6)**



**Bogdan (MAZ) 6425 – 3-axle AWD truck has excellent cross-country ability due to ground clearance of 35 cm, and blocking inter - axle and rear inter- wheel differentials. Vehicle can tow semitrailer with total weight up to 32 tons (maximum GCW (gross combination weight) of trailer train is 44 tons).**

## TECHNICAL SPECIFICATIONS

This model has large non-sprung cabin with 1 or 2 sleeping berths. Starting preheater enable reliable start of engine at low temperatures. Vehicle is also equipped with central tire inflation system. Front suspension is leaf spring, rear suspension has stabilizer bar.



Vehicle type	Road tractor 6x6
Dimensions (L/W/H), mm	8040 / 2270 / 3460
Wheelbase, mm	4200+1400
Ground clearance, mm	350
Curb weight, kg	11900
GVW, kg	25550
Payload of saddle, kg	11500
Engine	YaMZ-238 DE2 EURO2
Engine type	8 cylinder V-type diesel
Engine displacement, cm3	14860
Engine power, hp (kW)	330 (243)
Maximum torsion torque	1274
Maximum speed, km/h	85
Fuel tank volume, l	200+350
GCW, kg	44000

ARMORED TRUCK  
**BOGDAN 6317 (6X6)**



**BOGDAN 6317 all-wheel drive armored truck with fully armored cabin and passengers block cab, equipped with foldable seats for excellent cross-country ability due to ground clearans of 35 cm, blocking inter-axle and rear inter-wheels differentials.**

## TECHNICAL SPECIFICATIONS



Vehicle type	Drop-side 6x6 truck
Dimensions (L/W/H), mm	9872 / 2620 / 3280
Wheelbase, mm	4200+1400
Ground clearance, mm	350
Curb weight, kg	22540
GVW, kg	25150
Payload of chassis, kg	30000
Engine	YaMZ-238 DE2 EURO2
Engine type	8 cylinder V-type diesel
Engine displacement, cm3	14860
Engine power, hp (kW)	330 (243)
Maximum torsion torque	1521
Maximum speed, km/h	85
Fuel tank volume, l	200+350
Passengers capacity including crew	up to 23 persons



BUS

# BOGDAN A 222 (4X2)/(4X4)



**Small class busses Bogdan designed for transportation of organized groups of passengers on short and medium distances. All models of busses are built on a chassis from global automakers and can be equipped with engines of Euro 2,3,4,5 standards. In order of client needs, busses equip with a GPS system, microphone-speakers, autonomous air conditioning and heating of interior and driver's cab. High level of security is provided by hydraulic brakes, anti-lock braking system and the support system of the pressure in the wheels.**

## TECHNICAL SPECIFICATIONS

Suburban bus Bogdan A222 has 30 comfortable seats for passengers, luggage space under the seats with outside access and luggage racks above the seats. This model of the bus is specially designed for transportation of rapid response groups, public safety groups or transportation personnel between destinations in the city and beyond.

Units of the National Police, the National Guard or the armed forces, can use the bus.



Vehicle type	Shuttle bus chassis 4x2
Dimensions (L/W/H), mm	8210 / 2300 / 2780
Wheelbase, mm	4400
Curb weight, kg	6100
GVW, kg	10300
Number of seats, units	23
Engine	Ashok Leyland, Euro-3/4/5
Engine type	6 cylinder turbo diesel
Engine displacement volume, l	5,8
Engine power, hp	167
Maximum torsion torque	550
Maximum speed, km/h	90
Width of doorways, mm	820 / 1400
Number of doors for passengers	2
ABS	+





BUS  
**BOGDAN A145 (4X2)/(4X4)**



**Bogdan busses of middle-size class designed for transportation of passengers in comfortable conditions. All models of busses are built on a chassis from global automakers and can be equipped with engines of Euro 2,3,4,5 standards with low fuel consumption. In order of client needs, busses equip with a GPS system, microphone-speakers, autonomous air conditioning and heating of interior and driver's cab. High level of security is provided by hydraulic brakes, anti-lock braking system and the support system of the pressure in the wheels.**

## TECHNICAL SPECIFICATIONS

Suburban bus Bogdan A145 has 43 comfortable seats for passengers, luggage space under the seats with outside access and luggage racks above the seats. This model of the bus is well designed for transportation of rapid response groups, public safety groups or transportation personnel between destinations in the city and beyond.

Units of the National Police, the National Guard or the armed forces, can use this bus for different tasks.



Vehicle type	Shuttle bus chassis 4x2
Dimensions (L/W/H), mm	9880 / 2500 / 2960
Wheelbase, mm	4800
Curb weight, kg	9300
GVW, kg	14400
Number of seats, units	43
Engine	IVECO, Euro-3/4/5
Engine type	6 cylinder turbo diesel
Engine displacement volume, l	5,9
Engine power, hp	264
Maximum torsion torque	1000
Maximum speed, km/h	100
Width of doorways, mm	700 / 550
Number of doors for passengers	2
ABS	+

**Production of superstructures for trucks and specialized vehicles is one of additional activities of Bogdan Corporation. On customers demand Cherkassy plant produces a range of compartments for vehicles with different needs - transportation of passengers and cargo, as well as for other special tasks and needs.**

A range of kinds of superstructures can be produced at SE "Car Assembly Plant #2" in Cherkassy. First of all, compartments are intended for general transportation needs, but they can be equipped and used as module for temporary living, bath house for troops, field headquarters, field kitchen, radar station and ambulance station as well. Modules can be produced in different sizes according to customers needs.





Automobile Company "Bogdan Motors", PJSC  
29a Elektrykiv St., Kyiv, 04176 Ukraine  
Phone/fax.: +380 44 277 73 90  
Email: [mykhailo.buchak@bogdan.ua](mailto:mykhailo.buchak@bogdan.ua)  
Contact person Michael Buchak: +380 95 727 97 00